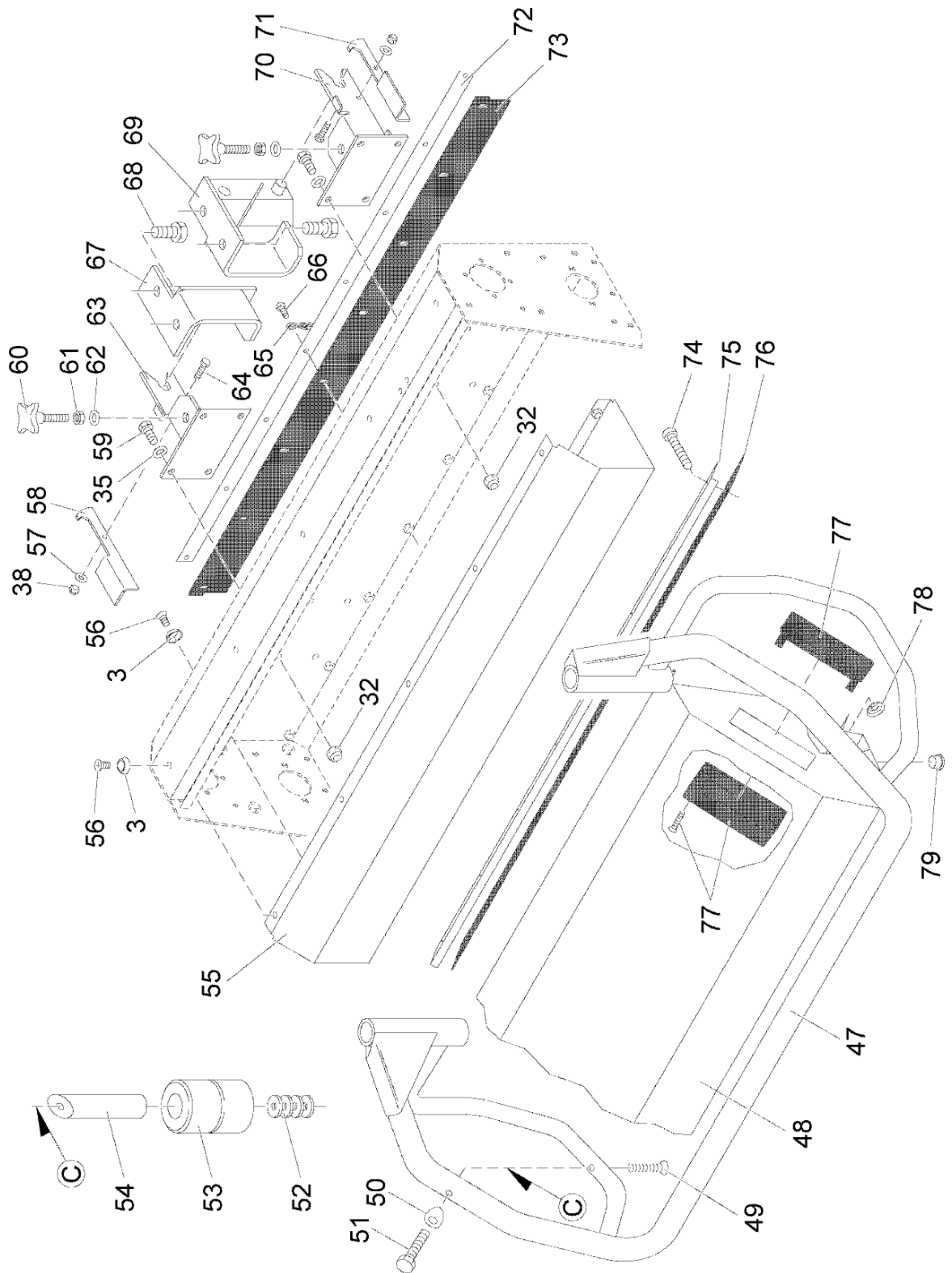


Pre-sweeper unit (7604) part 2 (99760400BT20)



Ⓑ

Pos.	Part No.	Material number	Description	Qty.	Remarks
3	00157690	12349023	Annular plate	18	
32	00051510	12040051	Hex. Nut	9	
35	00053750	12310041	Washer	14	
38	00051340	12040036	Hex. Nut	4	
47	00036420	96073440	Protective frame	1	
48	00018600	96061304	Tank	1	
49	00903480	11225414	Countersunk screw	2	
50	00748400	90217449	Washer	2	
51	00053130	11038304	Hexagon screw	2	
52	00879170	90209537	Washer	4	
53	00071000	90299793	Roller	2	
54	00070990	90299801	Bolt	2	
55	00245290	96061312	Profiled sheet	1	
56	00871440	11206182	Countersunk screw	11	
57	00555520	12332052	Washer	4	
58	00046970	90278953	Click	1	
59	00553690	11038635	Hex.bolt	8	
60	00059820	17133059	Star-handle bolt	2	
61	00053360	12022067	Hex. Nut	2	
62	00053760	12310058	Washer	2	
63	00821720	96060595	Mounting plate	1	
64	00106160	11038726	Hex.bolt	2	
65	00042830	90553868	Grounding chain	1	
66	00108650	11175189	Fillister-head screw	8	
67	00421830	96061346	Holder R.H.	1	
68	00053190	11038460	Hex.bolt	4	
69	00421810	96061338	Holder L.H.	1	
70	00821700	96060587	Mounting plate	1	
71	00046990	90278946	Click	1	
72	00245150	90279001	Sheet metal	1	
73	00512410	90278987	Sealing strip	1	
74	00157110	11405024	Tapping screw	8	
75	00245310	90278961	Angle plate	1	
76	00512380	90278995	Sealing rim	1	
77	00421820	90278862	Handle grip	2	
78	00047000	12181038	Snap nut	8	
79	00902300	15590243	Drain plug	3	